



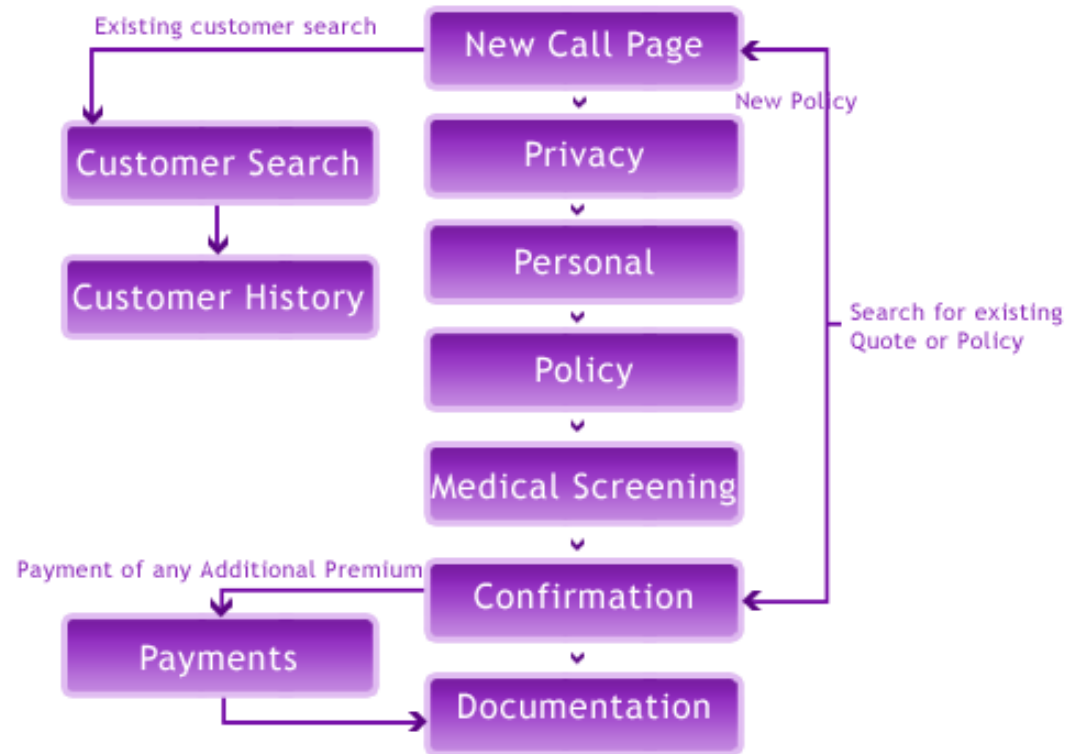
Magenta Screening



M diagram - Screening Step-by-Step Guide

In Built Medical screening rule set with Additional Premium and/or Additional Excess functionality

- > 100% Web Based
- > Simple scheme, duration, destination, and person data entry page
- > In Built Medical screening rule set with Additional Premium and/or Additional Excess functionality
- > Application of Multipliers in accordance with Healix best practice
- > Credit card payment handling and processing
- > Client defined Operator scripts on each page
- > Tailored covering letters and Medical screening confirmation documents can be printed, emailed or faxed to customers
- > FSA compliant audit trail and client history
- > Gross / Net / Commission / Net to Underwriter calculations and Premium Bordereaux
- > Self-managing administration section allowing a non technical administrator to create schemes, agents, and medical screening rules
- > Comprehensive reporting tool for the production of tailorable management information reports. See **Magenta Connect**
- > Can be connected to public websites to allow users to carry out own medical screening online. See **Magenta Connect**



The screenshot displays the Magenta Travel Insurance System interface. At the top, there is a navigation menu with options: HOME, DIRECT, AGENCY, MEDICAL, CLAIMS, REPORTS, UNDERWRITING, SPOOLER, and ADMIN. The main content area is titled "Incomplete Quote" with a quote reference of 12396 and a value of GBP £29.68. A sidebar on the left lists details such as Quote Date (21 Oct 2014), Campaign (The...), Scheme (PI S...), Destination (Euro), Duration (14), PAX (David Corney, 18 Nov 1...), and Quote/Policy History. The central section is titled "Summary:" and contains a table with three rows of questions and responses.

Question	Response	
1 How old were you when this diagnosis was made?	Over 50	EDIT
2 How long ago was the date of onset of your breathing problem?	under 5yr	EDIT
3 How many medicines do you take for THIS condition?	0-2	EDIT